

Anti-LPHN2 Antibody
Catalog # AP53822**Specification**

Anti-LPHN2 Antibody - Product Information

Application	WB, IHC
Primary Accession	O95490
Reactivity	Human, Mouse, Rat
Host	Rabbit
Clonality	Polyclonal
Calculated MW	163349

Anti-LPHN2 Antibody - Additional Information**Gene ID** 23266**Other Names**

KIAA0786; LEC1; LPHH1; Latrophilin-2; Calcium-independent alpha-latrotoxin receptor 2; CIRL-2; Latrophilin homolog 1; Lectomedin-1

Target/Specificity

Recognizes endogenous levels of LPHN2 protein.

Dilution

WB~~1/500 - 1/1000

IHC~~1:100~500

Format

Liquid in 0.42% Potassium phosphate, 0.87% Sodium chloride, pH 7.3, 30% glycerol, and 0.09% (W/V) sodium azide.

Storage

Store at -20 °C.Stable for 12 months from date of receipt

Anti-LPHN2 Antibody - Protein Information**Name** ADGRL2 ([HGNC:18582](#))**Function**

Orphan adhesion G-protein coupled receptor (aGPCR), which mediates synapse specificity (By similarity). Ligand binding causes a conformation change that triggers signaling via guanine nucleotide- binding proteins (G proteins) and modulates the activity of downstream effectors (By similarity). Following G-protein coupled receptor activation, associates with cell adhesion molecules that are expressed at the surface of adjacent cells to direct synapse specificity. Specifically mediates the establishment of perforant-path synapses on CA1-region pyramidal neurons in the hippocampus. Localizes to postsynaptic spines in excitatory synapses in the S.lacunosum- moleculare and interacts with presynaptic cell adhesion molecules, such as teneurins, promoting synapse formation (By similarity).

Cellular Location

Postsynaptic cell membrane {ECO:0000250|UniProtKB:Q8JZZ7}; Multi-pass membrane protein

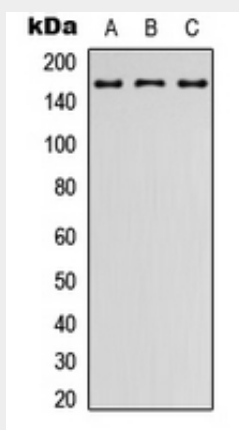
Tissue Location

Expressed very widely in all normal tissues tested. Expression is variable in tumor cell lines, apparently elevated in some lines and absent or markedly reduced in others

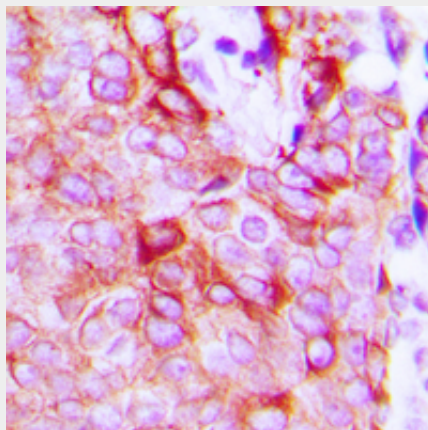
Anti-LPHN2 Antibody - Protocols

Provided below are standard protocols that you may find useful for product applications.

- [Western Blot](#)
- [Blocking Peptides](#)
- [Dot Blot](#)
- [Immunohistochemistry](#)
- [Immunofluorescence](#)
- [Immunoprecipitation](#)
- [Flow Cytometry](#)
- [Cell Culture](#)

Anti-LPHN2 Antibody - Images

Western blot analysis of LPHN2 expression in HEK293T (A), Raw264.7 (B), PC12 (C) whole cell lysates.



Immunohistochemical analysis of LPHN2 staining in human breast cancer formalin fixed paraffin

embedded tissue section. The section was pre-treated using heat mediated antigen retrieval with sodium citrate buffer (pH 6.0). The section was then incubated with the antibody at room temperature and detected using an HRP conjugated compact polymer system. DAB was used as the chromogen. The section was then counterstained with haematoxylin and mounted with DPX.

Anti-LPHN2 Antibody - Background

Rabbit polyclonal antibody to LPHN2